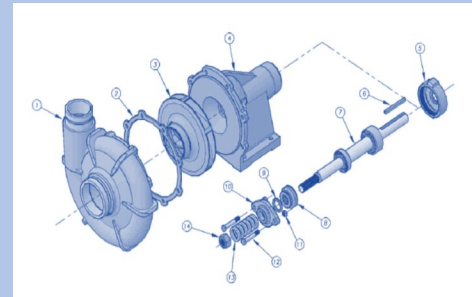
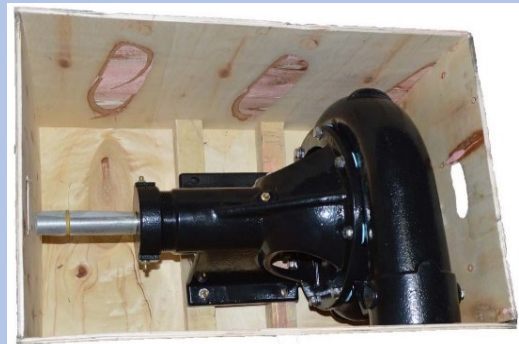
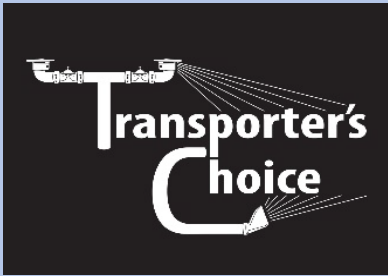
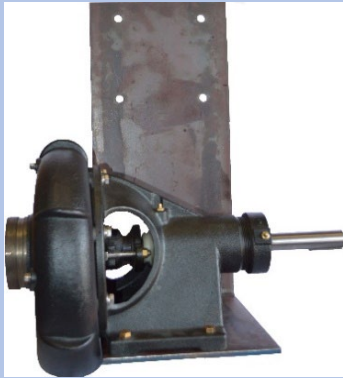
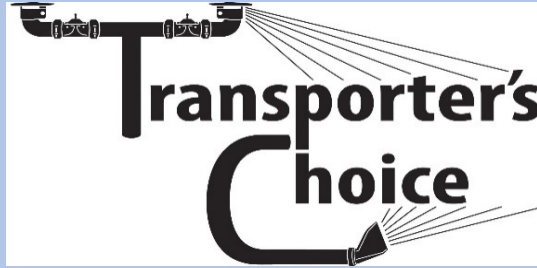




Committed to Our Customers

5 Campbell Drive SE  
Hermiston, Or. 97838  
800# 877-385-3125  
PH# 541-564-7636  
Fax# 541-564-6522

# Transporter Choice Water Truck Pumps Catalog



# Transporter Choice Water Truck Pumps

**Clockwise Rotation Pumps are generally used on Trucks with Automatic Transmissions.**

**PUMP-CW-GRV-RP-BK**

TC66899 Pump Clockwise Rotation 4" Inlet grooved x 3" grooved outlet Rope packed shaft (Black)

**PUMP-CW-GRV-MS-BK**

TC68417 Pump Clockwise Rotation 4" Inlet grooved x 3" grooved outlet Mechanical shaft (Black)

**PUMP-CW-GRV-RP-HD-BL**

Pump Clockwise Rotation 4" Inlet grooved x 3" grooved outlet Rope packed shaft Heavy-Duty Body & Frame (Blue)

**PUMP-CW-NPT-RP-BK**

TC66161 Pump Clockwise Rotation 4" Inlet FNPT x 3" FNPT outlet Rope packed shaft (Black)

**PUMP-CW-NPT-MS-BK**

TC68414 Pump Clockwise Rotation 4" Inlet FNPT x 3" FNPT outlet Mechanical shaft (Black)

**PUMP-CW-NPT-RP-HD-BL**

TC86070 Pump Clockwise Rotation 4" Inlet FNPT x 3" FNPT outlet Rope packed shaft Heavy Duty Body & Frame (Blue)

**PUMP-CW-GRV-RP-HD-BL**

TC86070 Pump Clockwise Rotation 4" Inlet GRV x 3" GRV outlet Rope packed shaft Heavy Duty-Body & Frame (Blue)

**PUMP-CW-MS-WV-BK-A**

TC85550 Pump Clockwise Rotation Mechanical seal shaft without Volute (Black)

**PUMP-CW-RP-WV-BK-A**

TC85552 Pump Clockwise Rotation Rope packed shaft without Volute (Black)

**Counter-Clockwise Rotation Pumps are generally used on Trucks with Manual Transmissions**

**PUMP-CCW-GRV-RP-BK**

TC66895 Pump Counter Clockwise Rotation 4" Inlet grooved x 3" grooved outlet Rope packed shaft

**PUMP-CCW-GRV-MS-BK**

TC68416 Pump Counter Clockwise Rotation 4" Inlet grooved x 3" grooved outlet Mechanical shaft (Black)

**PUMP-CCW-NPT-RP-BK**

TC66168 Pump Counter Clockwise Rotation 4" Inlet FNPT x 3" FNPT outlet Rope packed shaft (Black)

**PUMP-CCW-NPT-MS-BK**

TC68415 Pump Counter Clockwise Rotation 4" Inlet FNPT x 3" FNPT outlet Mechanical shaft (Black)

**PUMP-CCW-NPT-RP-HD-BL**

TC86070 Pump Clockwise Rotation 4" Inlet FNPT x 3" FNPT outlet Rope packed shaft Heavy Duty-Body & Frame (Blue)

**PUMP-CCW-MS-WV-BK-A**

**TC85549** Pump Counter Clockwise Rotation Mechanical seal shaft without Volute (Black)

**PUMP-CCW-RP-WV-BK-A**

**TC85551** Pump Counter Clockwise Rotation Rope packed shaft without Volute (Black)

**PUMP-TC69-875**

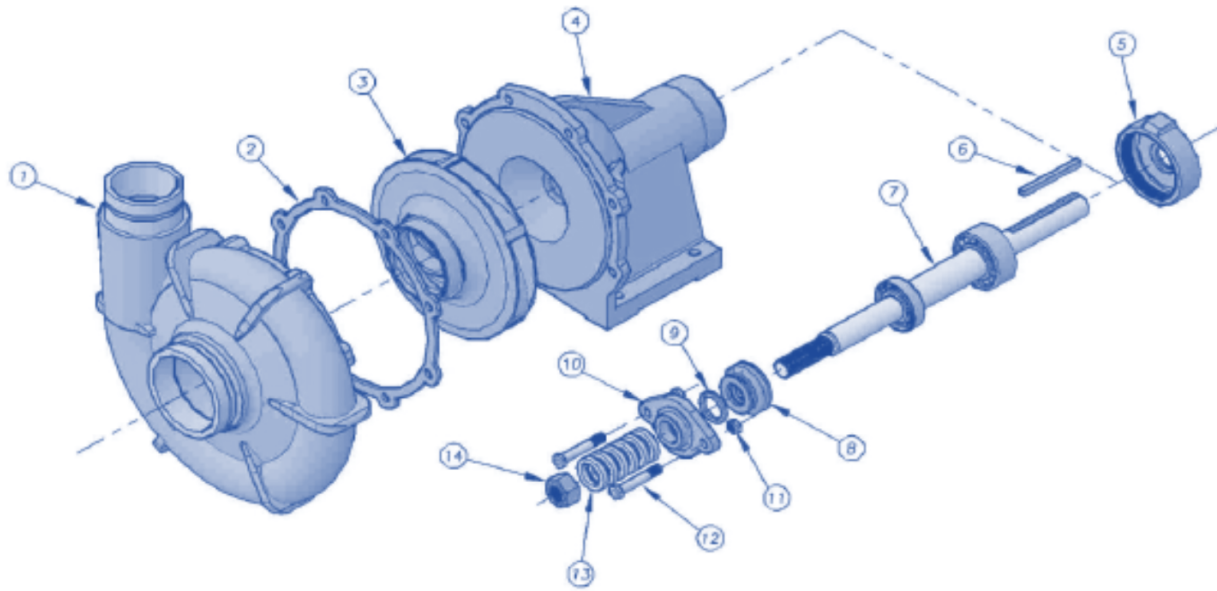
**Transporters Choice TC3ZRMS** Clockwise 4" Inlet x 3"Outlet FNPT Mech seal  
with built in Hydraulic adapter Black





**Transporters Choice Large Volume Pumps TC4JRGBHS**

**PUMP-TC69-743**

**Transporters Choice TC4JRGBHS** Mechanical Seal pump, Hydraulically driven, 5" x 4"  
Flanged water pump with a 13.5" Impeller. Driven directly by a SAE C 4-Bolt mount 1.25"  
14 tooth Splined Shaft hydraulic motor. Uses 116-M10176 coupling.

# PUMP PARTS TC3ZRM/TC3ZRMS



PART #	DRAWING #	
PUMP-VOLUTE-CCW-GRV	#1	
PUMP-VOLUTE-CCW-NPT	#1	
PUMP-VOLUTE-CW-GRV	#1	
PUMP-VOLUTE-CW-NPT	#1	
PUMP-GASKET	#2	
PUMO-CW-IMPELLER	#3	
PUMP-CCW-IMPELLER	#3	
PUMP-3-RP-BASE-#4	#4	
PUMP-3-MS-BASE-#4	#4	
PUMP-OUTER-BEARING-CAP	#5	
Pump-CW-SHAFT-KIT	Includes # 6,7 and 14	
Pump-CCW-SHAFT-KIT	Includes # 6,7 and 14	
PUMP-INNER-BEARING-CAP	#8	
PUMP-SLINGER	#9	
PUMP-PACKING-GLAND	#10	
PUMP-PACKING-GLAND-NUT	#11	
PUMP-PACKING-GLAND-BOLT	#12	
PUMP-PACKING-ROPE-KIT-B set of 6	#13	
PUMP-SHAFT-NUT	#14	
PUMP-MECH-SEAL-B	Mechanical Seal	
PUMP-TO-HYD-ADT		
PUMP-TO-HYD-ADT-body		
PUMP-TO-HYD-COUPLER		
PUMP-BRACKET-CCW-3/8T-10w		
PUMP-BRACKET-CW-3/8T-10w	